

## DESIGN/BUILD LANDSCAPE AND PLANTING NOTES

- Plant material to be installed and maintained by a qualified and experienced landscape installer.
- All materials are subject to the approval of the Landscape Architect and Owner at any time. Landscape Architect to inspect all plant locations and plant bed conditions prior to installation. Stake all plant locations for review and approval by the Landscape Architect before planting. On-site adjustments may be required. Plants are to be freshly dug. Transporting of plants shall be done in a manner as to not destroy the natural shape, compromise the health, or alter the characteristics of plant materials.
- Rootballs shall meet or exceed size standards as set forth in 'American Standards for Nursery Stock'. MAIN LEADERS OF ALL TREES SHALL REMAIN INTACT. Remove from the site any plant material that turns brown or defoliates within five (5) days after planting. Replace immediately with approved, specified material.
- Plant counts indicated on drawings are for Landscape Architect's use only. Contractor shall make own plant quantity takeoffs using drawings, specifications, and plant schedule requirements (i.e., spacing), unless otherwise directed by Landscape Architect. Contractor to verify bed measurements and install appropriate quantities as governed by plant spacing per schedule.
- All plant beds shall receive 3" minimum of genuine shredded hardwood bark mulch (unless otherwise noted). Apply pre-emergent herbicide as directed by the manufacturer prior to installing mulch. Seed all areas disturbed by construction activities that are not otherwise noted to receive pavement, planting bed, or other treatment.
- The Contractor shall install and/or amend topsoil in all proposed bed areas to meet ASTM D5268 standards. Landscaper shall verify depth and quality of topsoil prior to plant installation. A minimum of 4" of topsoil is required for lawn areas; 12" for plant beds. Topsoil sources shall include the reuse of surface soil stockpiled on site, clean of roots, plants, sod, stones, clay lumps, and other extraneous or foreign materials larger than 1". Supplement with imported topsoil from off-site sources when quantities are insufficient. Do not obtain supplemental topsoil from agricultural land, bogs, or marshes. Inorganic amendments, organic amendments, and fertilizers shall be used to amend topsoil as needed for long-term plant health.
- Verify all utility locations in the field prior to beginning work. Repair all damaged utilities to satisfaction of the Owner and Operating Authority at no additional cost.
- Install all plant material in accordance with all local codes and ordinances. Coordinate with the Owner to obtain any required permits necessary to complete work. All workmanship and materials shall be guaranteed by the Contractor for a period of one (1) calendar year after Final Acceptance.
- Maintain all plant material for a three (3) month period from date of Substantial Completion. Maintenance shall include pruning, cultivating, watering, weeding, fertilizing, restoring plant saucers, spraying for disease and insects, and replacing tree wrappings. Recommended long-term maintenance procedures shall be provided to the Owner before expiration of this period.
- Satisfactory Seeded Lawn: At end of maintenance period, a healthy, uniform, close stand of grass has been established, free of weeds and surface irregularities, with coverage exceeding 90 percent over any 10 sq. ft. (0.92 sq. m) and bare spots not exceeding 3 by 3 inches. Reestablish lawns that do not comply with requirements and continue maintenance until lawns are fully satisfactory to the Owner.

## ORDINANCE CHART

Zoning: S-1 - place of worship  
Adjacent zoning:  
North: S-1 single family home (same owner) - Buffer Yard D  
East: Secondary Arterial - Buffer Yard A  
South: Residential Parkway - Buffer Yard A  
West: S-1 - single family - Buffer Yard D

### BUFFERS\*

Requirements  
Type A: 4 shade or evergreen trees + 10 shrubs/100 l.f.  
Type D: 8 shade or evergreen (min. 30%) trees + 2 ornamental trees + 20 shrubs  
\*buffer edge lengths are of the area to be constructed only, not the entire buffer yard length of the property

Required  
North: Type D @ 328 l.f. = 26 shade or evergreen trees + 7 ornamental trees + 66 shrubs  
East: Type A @ 741 l.f. = 30 shade or evergreen trees + 74 shrubs  
South 1: Type A @ 328 l.f. = 13 shade or evergreen trees + 33 shrubs  
West: Type D @ 687 l.f. (extents of development) = 55 shade or evergreen trees + 14 ornamental trees + 137 shrubs

### Provided:

North: 41 existing trees to remain on north parcel + 5 shade trees + 2 evergreen trees + 39 shrubs  
East: 30 shade/evergreen trees + 74 shrubs  
South: 13 shade/evergreen trees + 33 shrubs  
West: 38 shade trees + 21 evergreen trees + 15 ornamental trees + 148 shrubs

### PARKING LOT INTERIOR

Requirement: Provide 1 shade tree + five shrubs/10 spaces  
Required: 110 spaces/10 = 11 shade trees + 55 shrubs  
Provided: 11 shade trees + 55 shrubs

### FOUNDATION PLANTINGS

Requirement: Provide planting beds at 5 foot width around entire building; shrubs, grasses, and ground cover shall cover at least 75% of this area.  
Required: 610 l.f. x 5 s.f. = 3,050 s.f. x 75% = 2,287.5 s.f. of planting bed  
Provided: 3,237 s.f. planting bed

### STREET TREES (No Median)

Requirement: Provide within the ROW trees spaced between 25' min. to 50' max.  
Required:

Shelborne Road: 741 l.f. - 25 l.f. (curb cut) = 14-29 trees  
141st Street: 328 l.f. - 25 l.f. (curb cut) = 6 to 12 tree

### Provided:

Shelborne Road: no trees provided due to overhead utility conflicts  
141st Street: no trees provided due to overhead utility conflicts

LANDSCAPING MUST BE PLANTED ACCORDING TO THE DETAILS ON SHEET L3 - SEE PLANTING DETAILS.



0 15' 30' 60'  
Scale 1" = 30'-0"

Consultant:

Certified by:



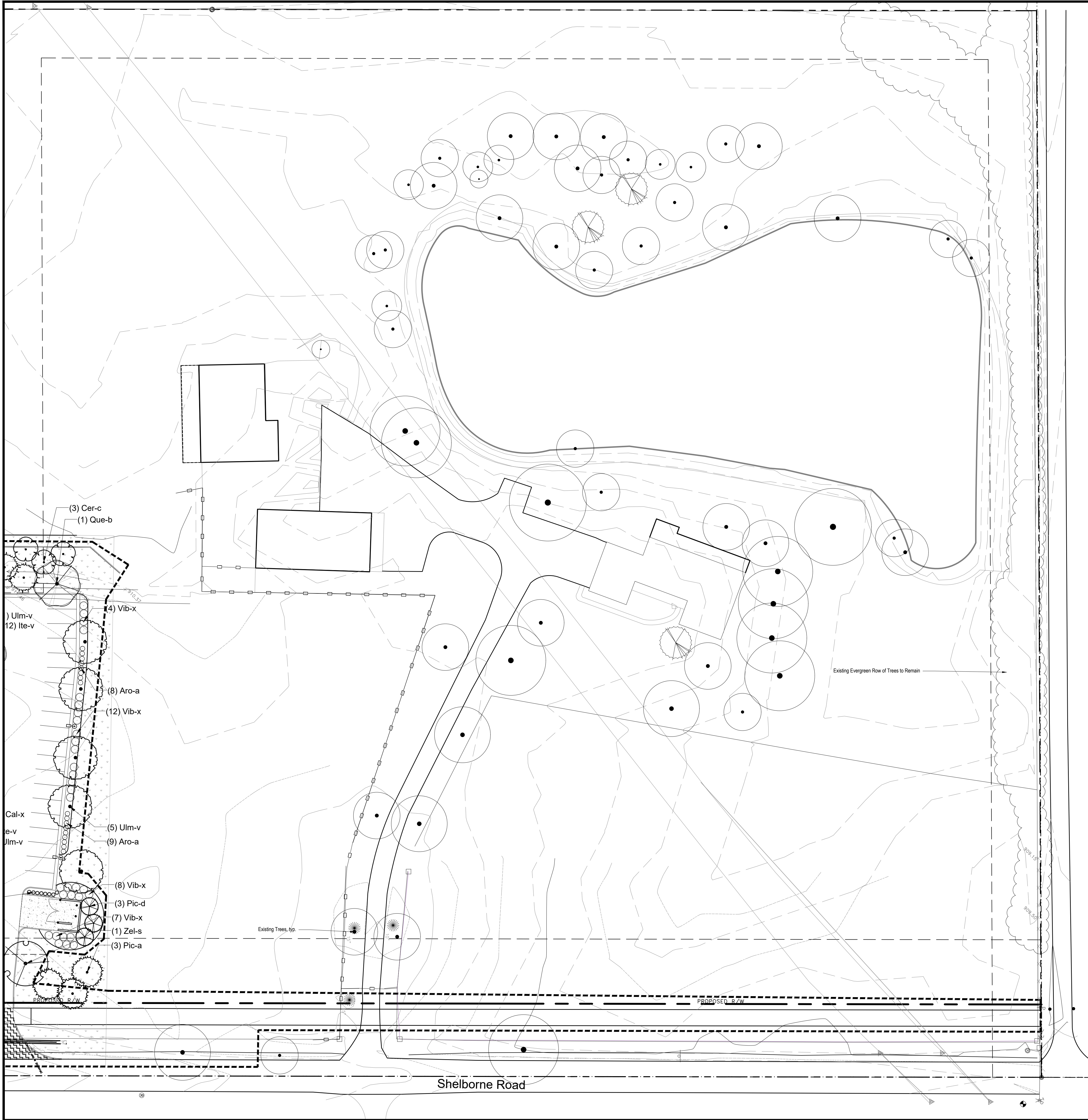
Revision	Date	Description
	06-09-2021	Permit resubmittal/city comments
	07-30-2021	Permit resubmittal/city comments

Date: 03/17/2021  
Job No: 2018-1162  
Drawn by: app  
Checked by: app

These Drawings and Specifications, and all copies thereof, are and shall remain the property and copyright of the Landscape Architect. They shall be used only with respect to this Project and are not to be used on any other Project or Work without prior written permission from the Landscape Architect.

Sheet No:

L1



## DESIGN/BUILD LANDSCAPE AND PLANTING NOTES

- Plant material to be installed and maintained by a qualified and experienced landscape installer.
- All materials are subject to the approval of the Landscape Architect and Owner at any time. Landscape Architect to inspect all plant locations and plant bed conditions prior to installation. Stake all plant locations for review and approval by the Landscape Architect before planting. On-site adjustments may be required. Plants are to be freshly dug. Transporting of plants shall be done in a manner as to not destroy the natural shape, compromise the health, or alter the characteristics of plant materials.
- Rootballs shall meet or exceed size standards as set forth in 'American Standards for Nursery Stock'. MAIN LEADERS OF ALL TREES SHALL REMAIN INTACT. Remove from the site any plant material that turns brown or defoliates within five (5) days after planting. Replace immediately with approved, specified material.
- Plant counts indicated on drawings are for Landscape Architect's use only. Contractor shall make own plant quantity takeoffs using drawings, specifications, and plant schedule requirements (i.e., spacing), unless otherwise directed by Landscape Architect. Contractor to verify bed measurements and install appropriate quantities as governed by plant spacing per schedule.
- All plant beds shall receive 3" minimum of genuine shredded hardwood bark mulch (unless otherwise noted). Apply pre-emergent herbicide as directed by the manufacturer prior to installing mulch. Seed all areas disturbed by construction activities that are not otherwise noted to receive pavement, planting bed, or other treatment.
- The Contractor shall install and/or amend topsoil in all proposed bed areas to meet ASTM D5268 standards. Landscaper shall verify depth and quality of topsoil prior to plant installation. A minimum of 4" of topsoil is required for lawn areas; 12" for plant beds. Topsoil sources shall include the reuse of surface soil stockpiled on site, clean of roots, plants, sod, stones, clay lumps, and other extraneous or foreign materials larger than 1". Supplement with imported topsoil from off-site sources when quantities are insufficient. Do not obtain supplemental topsoil from agricultural land, bogs, or marshes. Inorganic amendments, organic amendments, and fertilizers shall be used to amend topsoil as needed for long-term plant health.
- Verify all utility locations in the field prior to beginning work. Repair all damaged utilities to satisfaction of the Owner and Operating Authority at no additional cost.
- Install all plant material in accordance with all local codes and ordinances. Coordinate with the Owner to obtain any required permits necessary to complete work. All workmanship and materials shall be guaranteed by the Contractor for a period of one (1) calendar year after Final Acceptance.
- Maintain all plant material for a three (3) month period from date of Substantial Completion. Maintenance shall include pruning, cultivating, watering, weeding, fertilizing, restoring plant saucers, spraying for disease and insects, and replacing tree wrappings. Recommended long-term maintenance procedures shall be provided to the Owner before expiration of this period.
- Satisfactory Seeded Lawn: At end of maintenance period, a healthy, uniform, close stand of grass has been established, free of weeds and surface irregularities, with coverage exceeding 90 percent over any 10 sq. ft. (0.92 sq. m) and bare spots not exceeding 3 by 3 inches. Reestablish lawns that do not comply with requirements and continue maintenance until lawns are fully satisfactory to the Owner.

## ORDINANCE CHART

**ORDINANCE CHART**  
Zoning: S-1 - place of worship  
Adjacent zoning:  
North: S-1 single family home (same owner) - Buffer Yard D  
East: Secondary Arterial - Buffer Yard A  
South: Residential Parkway - Buffer Yard A  
West: S-1 - single family - Buffer Yard D

**BUFFERS\***  
Requirements  
Type A: 4 shade or evergreen trees + 10 shrubs/100 l.f.  
Type D: 8 shade or evergreen (min. 30%) trees + 2 ornamental trees + 20 shrubs  
\*buffer edge lengths are of the area to be constructed only, not the entire buffer yard length of the property

**Required**  
North: Type D @ 328 l.f. = 26 shade or evergreen trees + 7 ornamental trees + 66 shrubs  
East: Type A @ 741 l.f. = 30 shade or evergreen trees + 74 shrubs  
South: Type A @ 328 l.f. = 13 shade or evergreen trees + 33 shrubs  
West: Type D @ 687 l.f. (extents of development) = 55 shade or evergreen trees + 14 ornamental trees + 137 shrubs

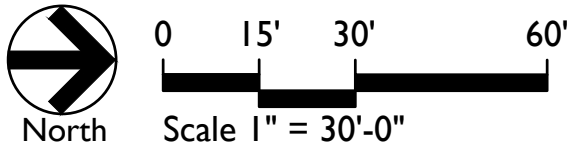
**Provided:**  
North: 41 existing trees to remain on north parcel + 5 shade trees + 2 evergreen trees + 39 shrubs  
East: 30 shade/evergreen trees + 74 shrubs  
South: 13 shade/evergreen trees + 33 shrubs  
West: 38 shade trees + 21 evergreen trees + 15 ornamental trees + 148 shrubs

**PARKING LOT INTERIOR**  
Requirement: Provide 1 shade tree + five shrubs/10 spaces  
Required: 110 spaces/10 = 11 shade trees + 55 shrubs  
Provided: 11 shade trees + 55 shrubs

**FOUNDATION PLANTINGS**  
Requirement: Provide planting beds at 5 foot width around entire building; shrubs, grasses, and ground cover shall cover at least 75% of this area.  
Required: 610 l.f. x 5 s.f. = 3,050 s.f. x 75% = 2,287.5 s.f. of planting bed  
Provided: 3,237 s.f. planting bed

**STREET TREES (No Median)**  
Requirement: Provide within the ROW trees spaced between 25' min. to 50' max.  
Required:  
Shelborne Road: 741 l.f. - 25 l.f. (curb cut) = 14-29 trees  
141st Street: 328 l.f. - 25 l.f. (curb cut) = 6 to 12 tree  
Provided:  
Shelborne Road: no trees provided due to overhead utility conflicts  
141st Street: no trees provided due to overhead utility conflicts

LANDSCAPING MUST BE PLANTED ACCORDING TO THE DETAILS ON SHEET L3 - SEE PLANTING DETAILS.



Consultant:

Certified by:



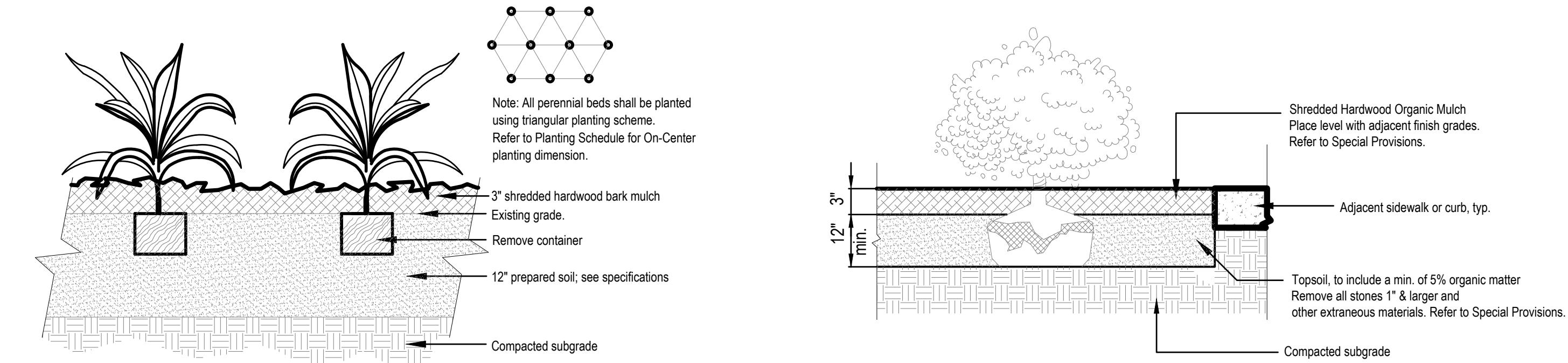
Revision	Date	Description
	06-09-2021	Permit resubmittal/city comments
	07-30-2021	Permit resubmittal/city comments

Date: 03/17/2021  
Job No: 2018-1162  
Drawn by: app  
Checked by: app

These Drawings and Specifications, and all copies thereof, are and shall remain the property and copyright of the Landscape Architect. They shall be used only with respect to this Project and are not to be used on any other Project or Work without prior written permission from the Landscape Architect.

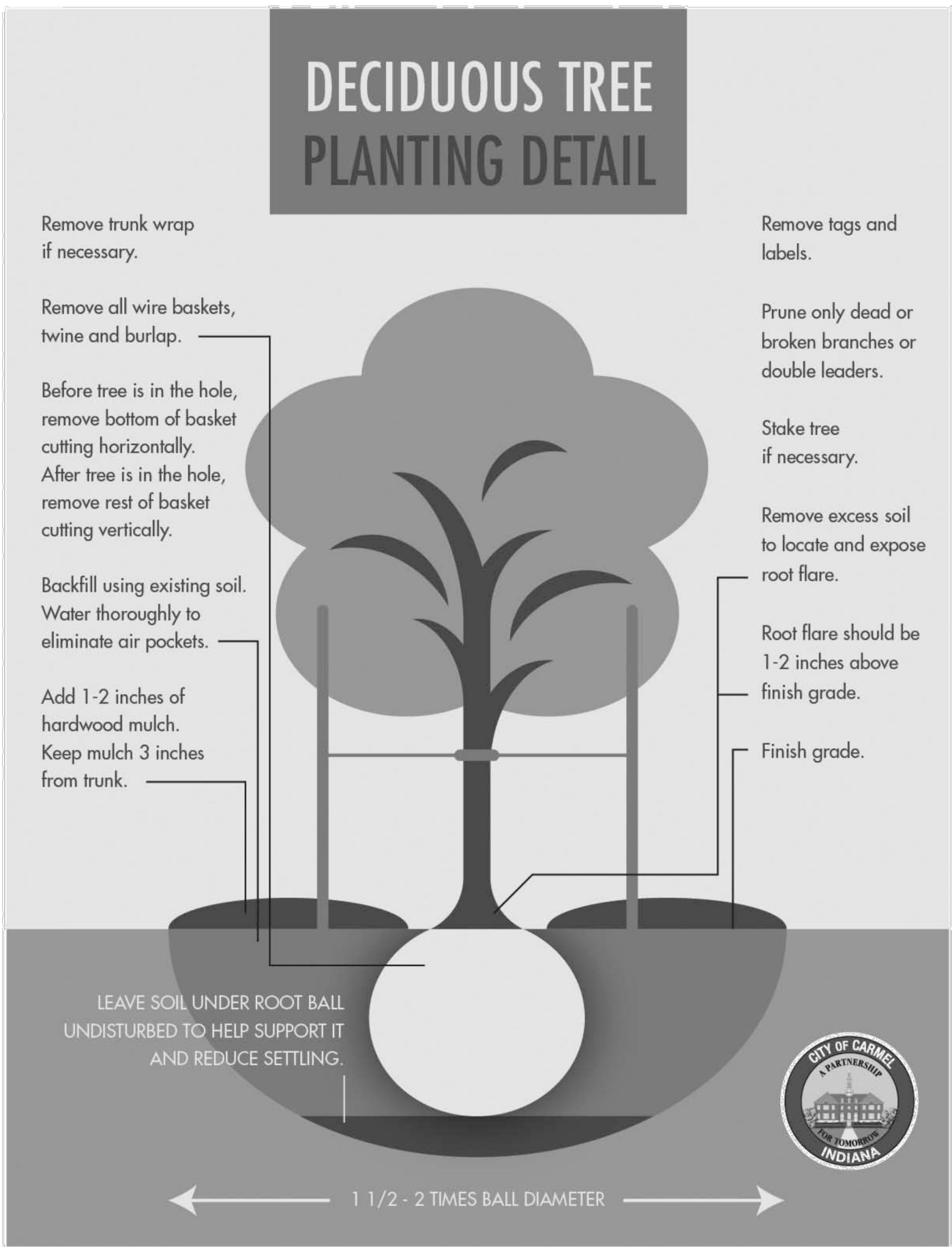
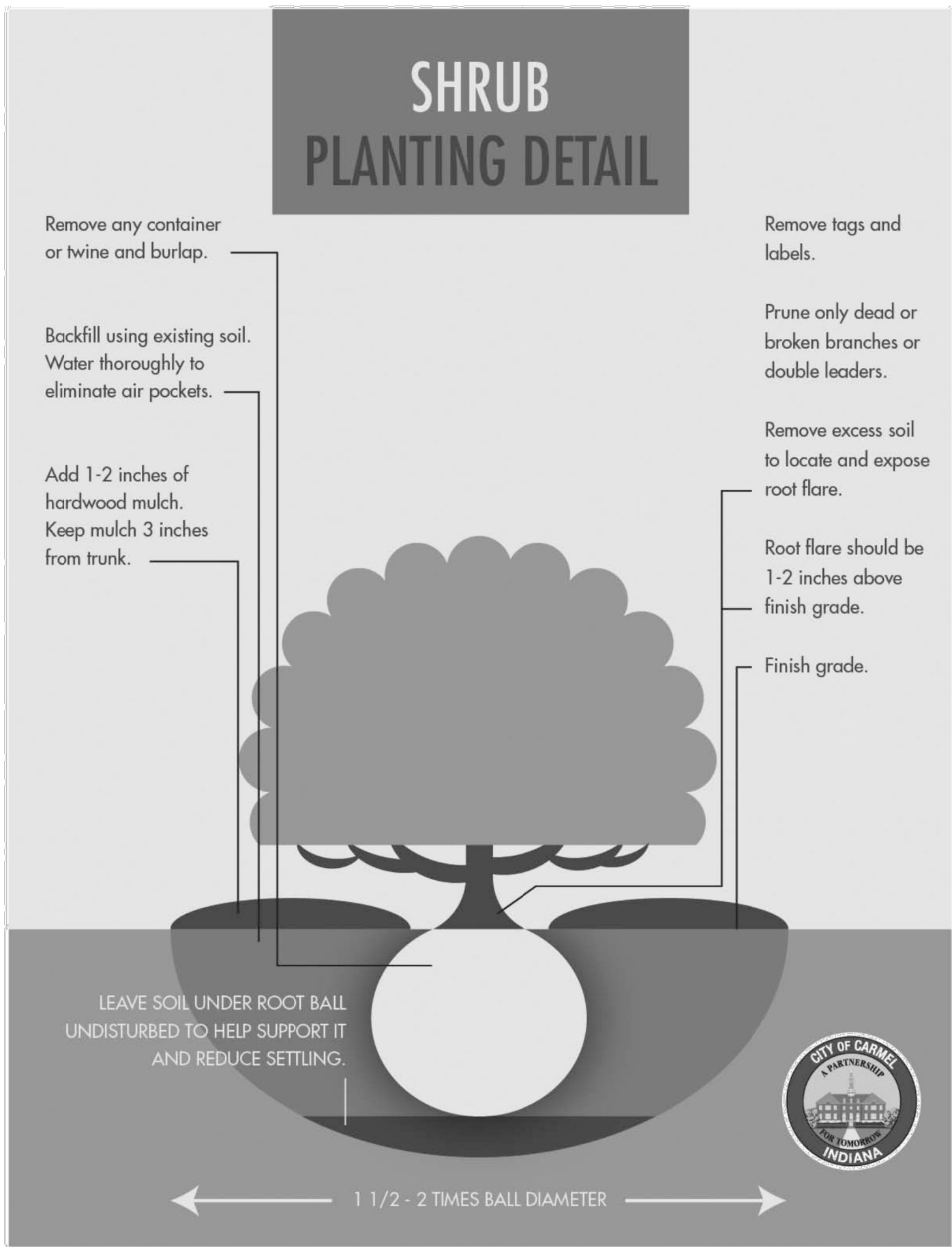
PLANT SCHEDULE						
TREES	QTY	BOTANICAL NAME	COMMON NAME	CONT	CAL	REMARKS
Bet-n	10	Betula nigra	River Birch	B & B	min. 8' ht.	clump form, 3-5 stems
Gin-p	3	Ginkgo biloba 'Princeton Sentry'	Princeton Sentry Ginkgo	B & B	min. 2.5" cal.	full, strong central leader, matched
Gle-t	5	Gleditsia triacanthos inermis 'Skycole'	Skyline Thornless Honeylocust	B & B	min. 2.5" cal.	full, strong central leader, matched
Lir-t	6	Liriodendron tulipifera	Tulip Tree	B & B	min. 2.5" cal.	full, strong central leader, matched
Nys-s	3	Nyssa sylvatica	Sour Gum	B & B	min. 2.5" cal.	full, strong central leader, matched
Pla-a	4	Platanus x acerifolia 'Bloodgood'	London Plane Tree	B & B	min. 2.5" cal.	full, strong central leader, matched
Que-b	12	Quercus bicolor	Swamp White Oak	B & B	min. 2.5" cal.	spring dug, full, strong central leader, matched
Que-x	6	Quercus robur 'Fastigiata'	Columnar English Oak	B & B	min. 2.5" cal.	spring dug, full, strong central leader, matched
Que-r	5	Quercus rubra	Red Oak	B & B	min. 2.5" cal.	spring dug, full, strong central leader, matched
Tax-d	1	Taxodium distichum	Bald Cypress	B & B	min. 2.5" cal.	full, strong central leader, matched
Ulm-v	18	Ulmus americana 'Valley Forge'	Valley Forge Elm	B & B	min. 2.5" cal.	full, strong central leader, matched
Zel-s	9	Zelkova serrata 'Green Vase'	Green Vase Sawleaf Zelkova	B & B	min. 2.5" cal.	full, strong central leader, matched
EVERGREEN TREES	QTY	BOTANICAL NAME	COMMON NAME	CONT	CAL	REMARKS
Pic-a	12	Picea abies	Norway Spruce	B & B	min. 6' ht.	full, strong central leader, matched, symmetrical
Pic-d	7	Picea glauca 'Densata'	Black Hills Spruce	B & B	min. 6' ht.	full, strong central leader, matched, symmetrical
Pic-o	9	Picea omorika	Serbian Spruce	B & B	min. 6' ht.	full, strong central leader, matched, symmetrical
Pic-p	5	Picea pungens	Colorado Spruce	B & B	min. 6' ht.	full, strong central leader, matched, symmetrical
ORNAMENTAL TREES	QTY	BOTANICAL NAME	COMMON NAME	CONT	CAL	REMARKS
Ame-x	14	Amelanchier x grandiflora 'Autumn Brilliance'	Autumn Brilliance Serviceberry	B & B	min. 6' ht.	clump form, 5-13 stems
Cer-c	5	Cercis canadensis	Eastern Redbud	B & B	min. 6' ht.	clump form, 3-7 stems
Syr-r	4	Syringa reticulata 'Ivory Silk'	Ivory Silk Japanese Tree Lilac	B & B	min. 1.5" cal.	full, strong central leader, matched
SHRUBS	QTY	BOTANICAL NAME	COMMON NAME	SIZE	HEIGHT	REMARKS
Aro-a	41	Aronia arbutifolia 'Brilliantissima'	Brilliant Red Chokeberry	container	24"	space @ 3'-0" o.c.
Bux-x	65	Buxus x koreana 'Winter Gem'	Winter Gem Boxwood	container	24"	space @3'-0" o.c. allow to mass
Cor-c	24	Cornus sericea 'Arctic Fire'	Arctic Fire Red Twig Dogwood	container	24"	space @ 2'-6" o.c.
Cor-s	31	Cornus sericea 'Cardinal'	Cardinal Red-twig Dogwood	container	24"	space @ 4'-0" o.c.
Die-l	69	Diervilla lonicera 'Kodiak Orange'	Kodiak Orange Northern Bush Honeysuckle	container	24"	space @ 3'-0" o.c.
Hyd-q	19	Hydrangea quercifolia	Oakleaf Hydrangea	container	24"	space @ 4'-0" o.c.
Hyd-w	33	Hydrangea quercifolia 'Pee Wee'	Pee Wee Oakleaf Hydrangea	container	24"	space @ 3'-0" o.c.
Ile-v	49	Ilex verticillata 'Red Sprite'	Red Sprite Winterberry	container	24"	space @ 4'-0" o.c., allow to mass; provide 1 Jim Dandy per 5 Red Sprites
Ite-v	49	Itea virginica 'Sprich'	Little Henry Virginia Sweetspire	container	18" ht. min.	space @ 3'-0" o.c.
Jun-v	14	Juniperus virginiana 'Grey Owl'	Eastern Redcedar	container	18"	space @ 3'-0" o.c. allow to mass
Myr-p	10	Myrica pensylvanica	Northern Bayberry	container	24"	space @ 5'-6" o.c., allow to mass
Phy-o	26	Physocarpus opulifolius 'Summer Wine'	Summer Wine Ninebark	container	30"	spae @ 4'-0" o.c.
Vib-x	72	Viburnum x juddii	Judd Viburnum	container	30"	space @ 5'-0" o.c.
GRASSES	QTY	BOTANICAL NAME	COMMON NAME	SIZE	HEIGHT	REMARKS
Cal-x	70	Calamagrostis x acutiflora 'Karl Foerster'	Karl Foerster Feather Reed Grass	pot	#2	space @ 2'-6" o.c.
Pan-v	5	Panicum virgatum 'Heavy Metal'	Heavy Metal Switch Grass	pot	#2	space @ 3'-0" o.c.
Spo-h	69	Sporobolus heterolepis	Prairie Dropseed	pot	#1	space @ 2'-0" o.c.
ANNUALS/PERENNIALS	QTY	BOTANICAL NAME	COMMON NAME	SIZE	HEIGHT	REMARKS
Dia-x	69	Dianthus x 'Fire and Ice'	Fire and Ice Carnation	pot	#1	space @ 12" o.c.
Nep-x	103	Nepeta x faassenii 'Junior Walker'	Junior Walker Catmint	pot	#1	space @ 2'-6"

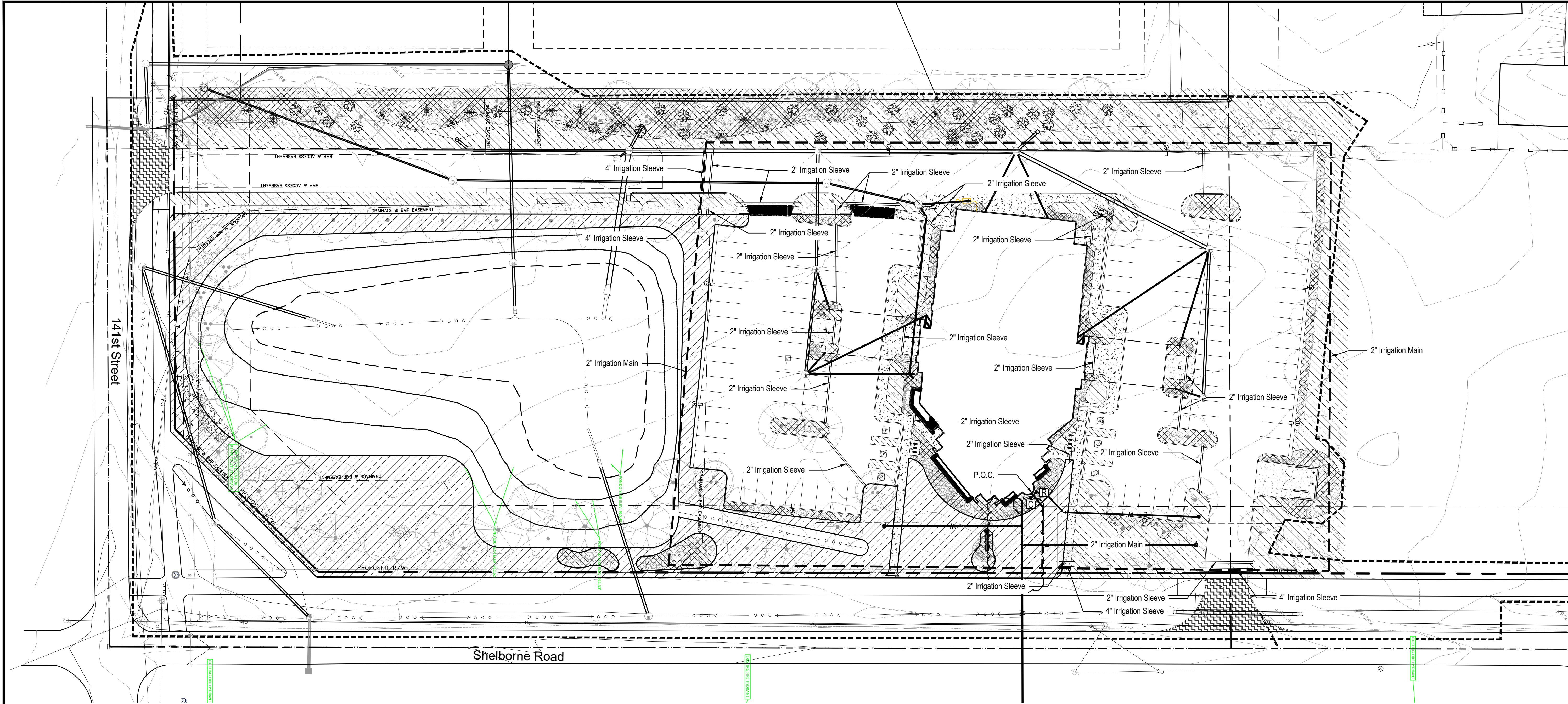
- Area to receive lawn
- Area to receive native seeding - Provide three families of seed based on elevation around pond.



PERENNIAL PLANTING  
Not to Scale

LANDSCAPE BED PREPARATION  
Not to Scale



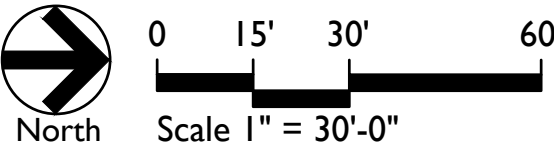


GENERAL IRRIGATION NOTES:

1. The Irrigation Contractor shall provide head layout for all areas to be irrigated. Verify water pressure to ensure zones will receive adequate pressure for all heads and rotors.
2. It is the responsibility of the irrigation contractor to be familiar with all grades difference, locations of walls, structures and utilities and make the necessary adjustments to accommodate the irrigation system as designed.
3. The irrigation contractor shall verify water pressures prior to design and construction. Report differences between requirements and actual readings to the Owner's authorized representative. A booster pump may be necessary if the required pressure is not available. Additional costs shall be submitted to the Owner as a change order. Verify exact point of connection location in the field with the Owner's representative. The flow demand for individual mainlines shall not exceed the following guidelines: 1.25" Class 160-18-28gpm
4. The Owner shall provide 120V-AC power source at the controller location. The irrigation contractor shall make the final connection from the electrical source to the controller.
5. A rain sensor shall be installed in the vicinity of the controller. Coordinate mounting location with the Owner.
6. Install all backflow prevention devices and all piping between the point of connection and the backflow preventer as per local codes.
7. Final location of the backflow preventer and the automatic controller shall be approved by the Owner's representative per local codes.
8. A quick coupling valve shall be located at the irrigation water supply point of connection to provide for a point of injection of compressed air to purge the system of retained water for winterization.
9. Pipe size shall conform to those shown on drawings. No substitutions of smaller pipe sizes shall be permitted, but substitutions for larger sizes may be approved. Minimum pipe shall be 1".
10. All pipe and communication wire under hard surfaces shall be placed in separate sleeving. All wire shall run, whenever possible with the mainline.
11. All lateral zones shall be connected to the mainline with PVC pipe and sized as follows:  
1" Class 200-0-30 gpm
12. All sprinkler heads shall be set perpendicular and flush to finish grade and with a clearance of 2" (min.) from the edge of any hardscape unless otherwise specified.
13. Check valves shall be installed on all irrigation heads in areas where finish grade exceeds 4:1, where post valve shutoff draining of the irrigation head occurs or as directed by the Owner's representative.
14. All sprinkler heads and valves shall be flushed and adjusted for optimum coverage with minimum over spray on hardscapes or buildings.
15. Provide pressure compensating screens and/or nozzles to reduce or eliminate over spray onto walks, streets, or other areas directed by the Owner's authorized representative.
16. All irrigation equipment shall be installed as per manufacturer's recommendations and specifications.
17. Refer to the specifications for additional detailed information.

IRRIGATION LEGEND

- Planting Beds to be Irrigated with 12" pop up sprays
- Lawn to be Irrigated with 4" pop up sprays and rotors
- P.O.C. Point of Connection
- Backflow Preventer
- Rain Sensor
- Controller, Contractor to Install on Exterior Wall or Exterior Cabinet per Owner's Direction.
- 2" Main Line



Consultant:

Certified by:



Construction Drawings for the

**ISLAMIC LIFE CENTER**

14120 Shelborne Road, Carmel, Indiana

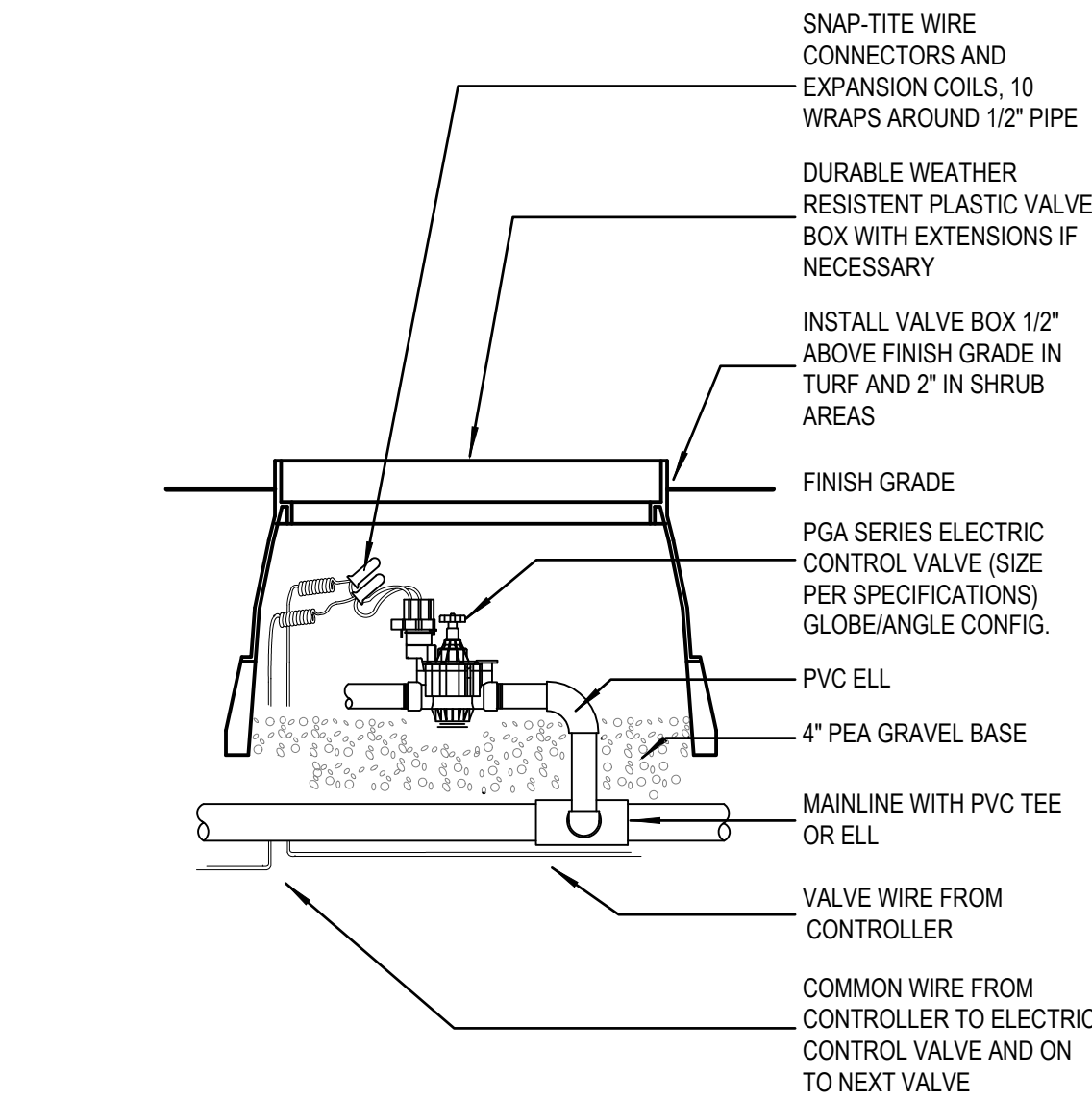
Concept Irrigation Plan

Revision	Date	Description
	06-09-2021	Permit resubmittal/city comments
	07-30-2021	Permit resubmittal/city comments

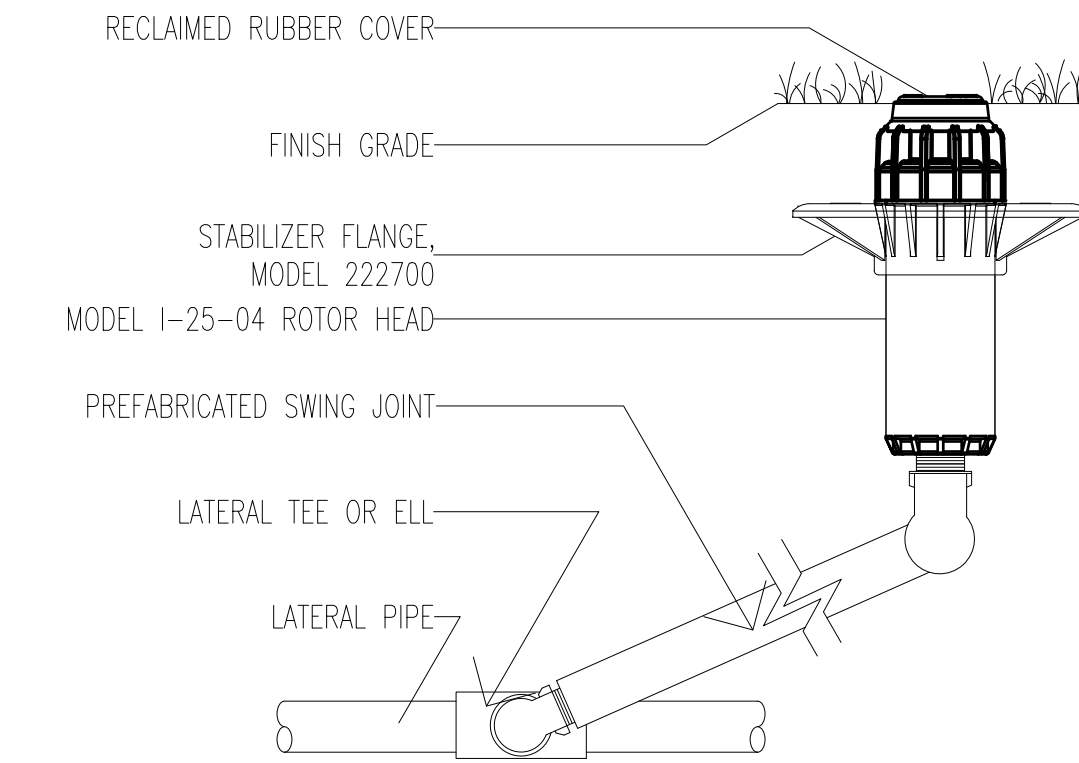
Date: 03/17/2021  
Job No: 2018-1162  
Drawn by: app  
Checked by: app

These Drawings and Specifications, and all copies thereof are and shall remain the property and copyright of the Landscape Architect. They shall be used only with respect to this Project and are not to be used on any other Project or Work without prior written permission from the Landscape Architect.

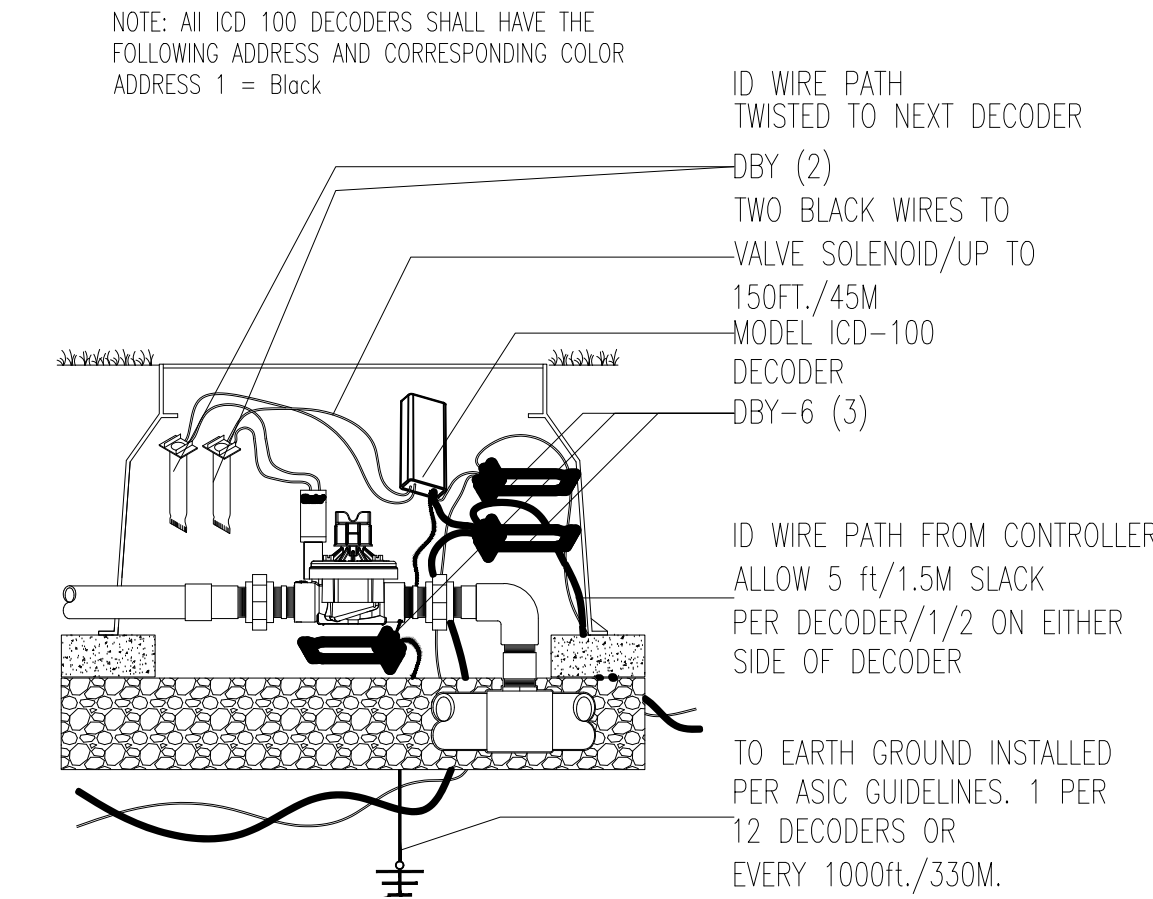
Sheet No: **L4**



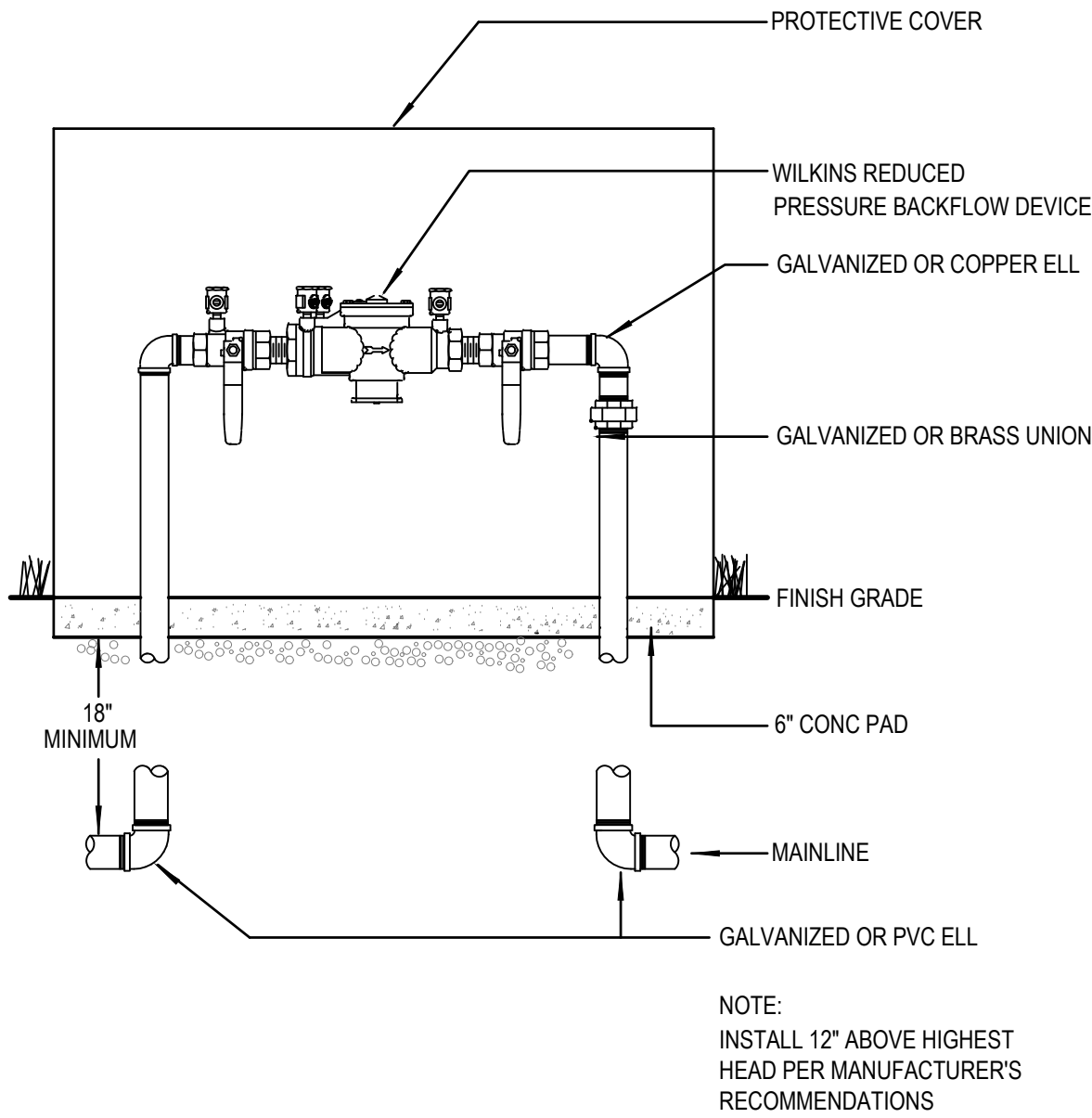
8 PGA-PRS-DIAL CONTROL VALVE  
Scale: 1" = 1'-0"



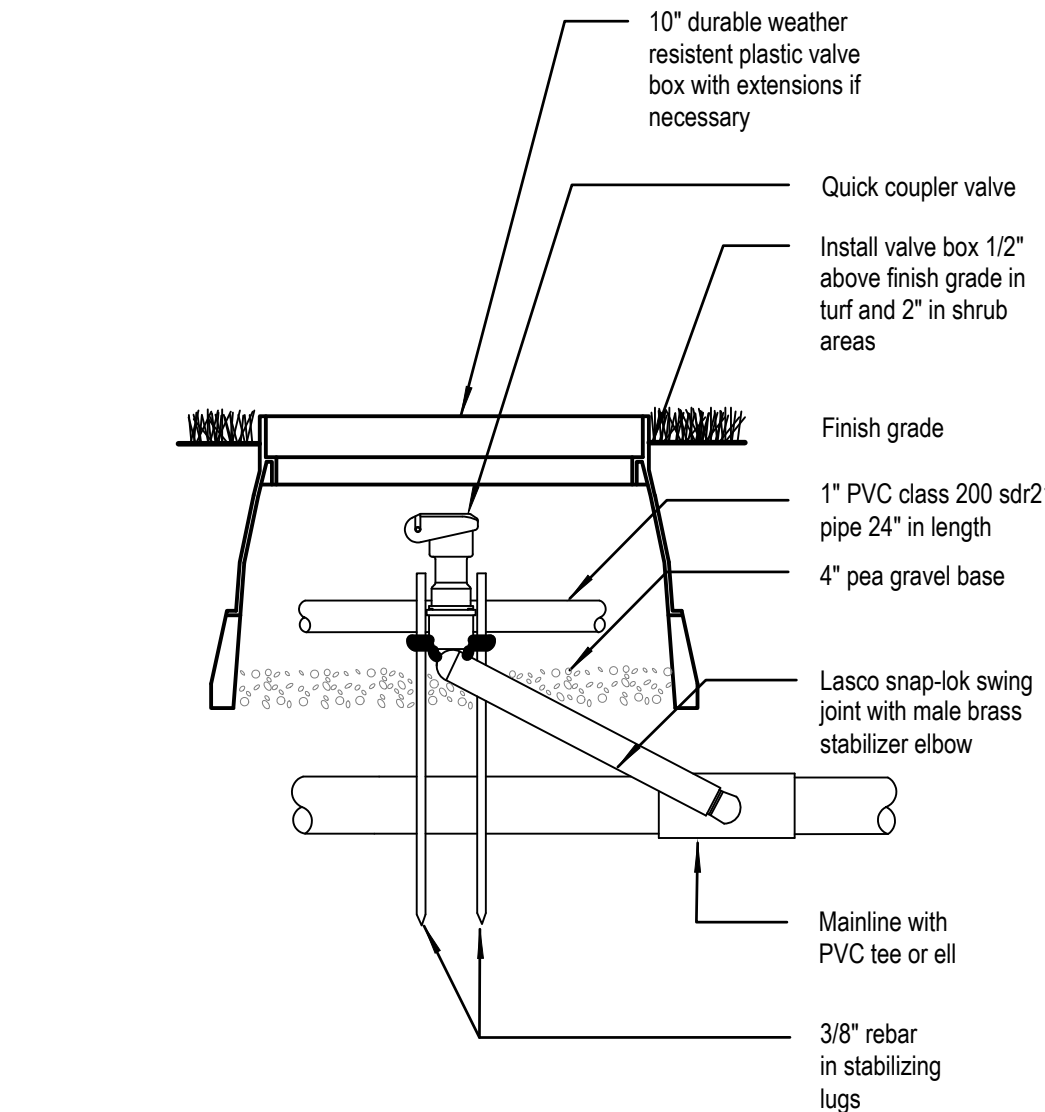
5 I-25 ROTOR HEAD  
Not to Scale



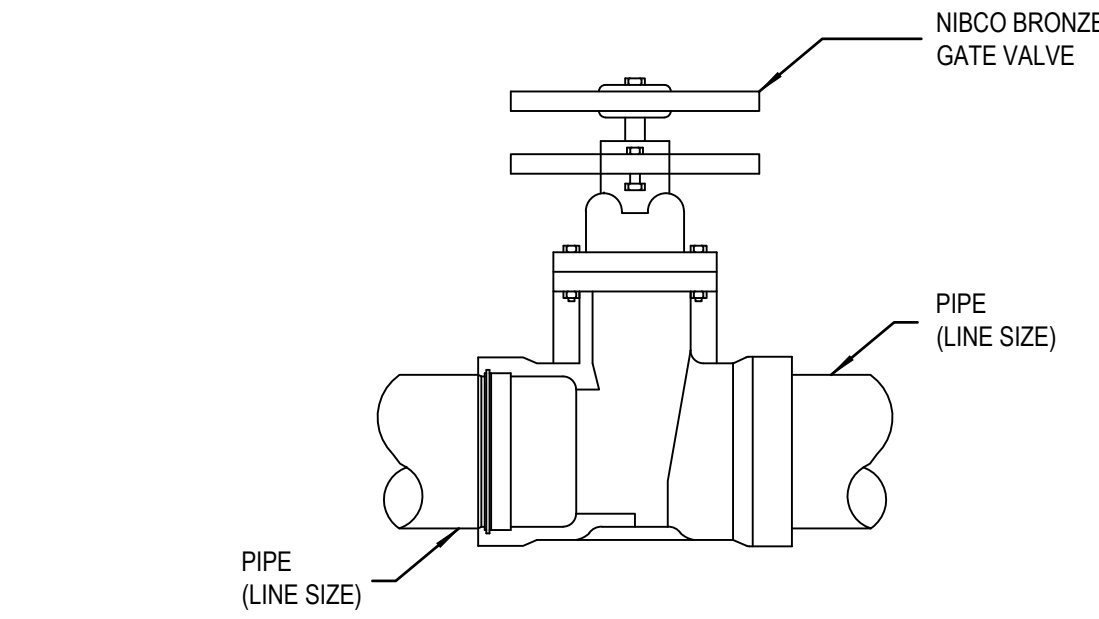
2 ICD DECODER  
Not to Scale



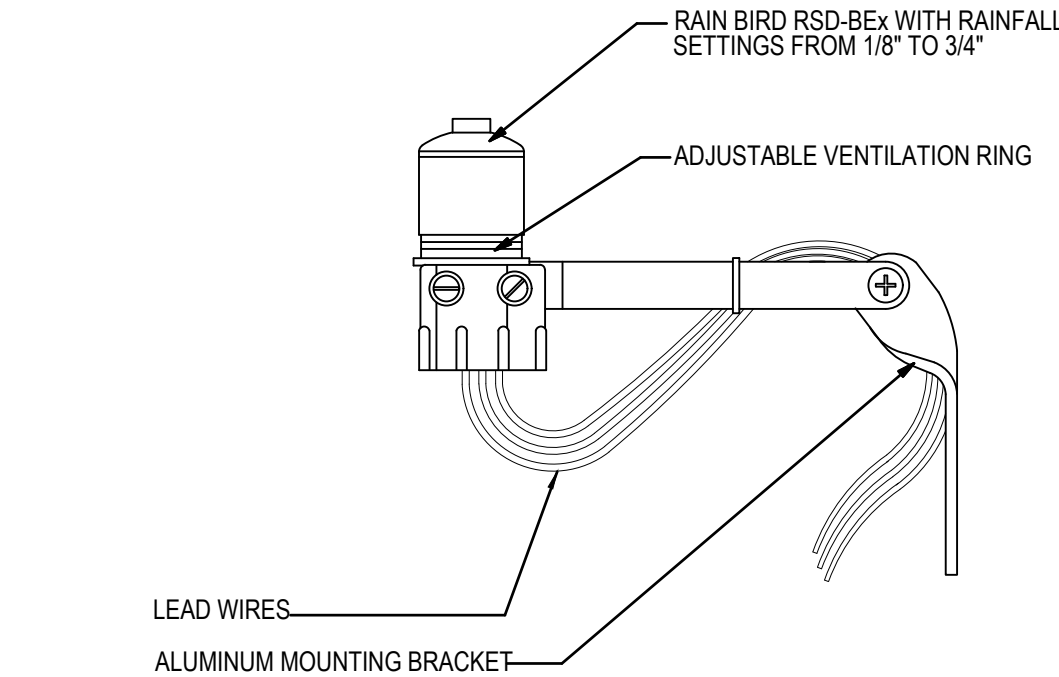
7 BACKFLOW WITH ENCLOSURE  
Scale: 1" = 1'-0"



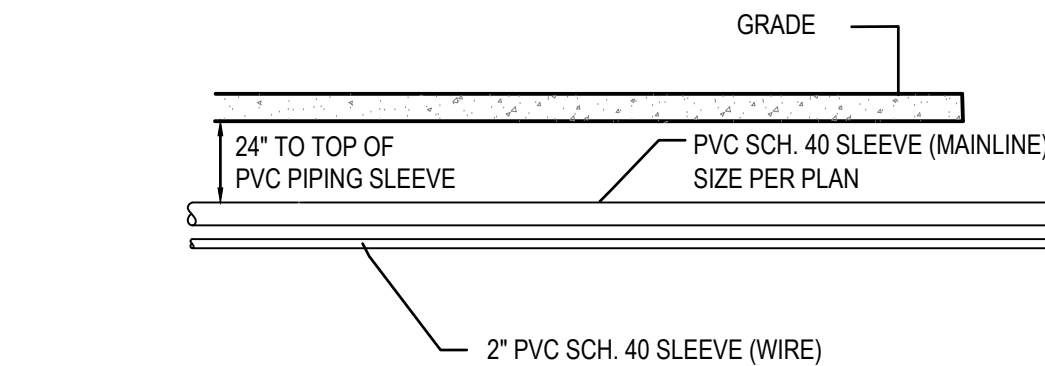
4 QUICK COUPLER VALVE  
Scale: 1" = 1'-0"



1 ISOLATION VALVE  
Not to Scale



6 RAIN SENSOR RSD-BEx  
Scale: 1" = 1'-0"



3 SLEEVE DETAIL  
Scale: 1" = 1'-0"



Consultant:

Certified by:



Revision	Date	Description
	06-09-2021	Permit resubmittal/city comments
	07-30-2021	Permit resubmittal comments

Date:	03/17/2021
Job No:	2018-1162
Drawn by:	app
Checked by:	app

These Drawings and Specifications, and all copies thereof, are and shall remain the property and copyright of the Landscape Architect. They shall be used only with respect to this Project and are not to be used on any other Project or Work without prior written permission from the Landscape Architect.